

FEED SAFETY DATA SHEET

CMS (CONDENSED MOLASSES FERMENTATION SOLUBLES), CMS PLUS (CONDENSED MOLASSES FERMENTATION SOLUBLES PLUS)

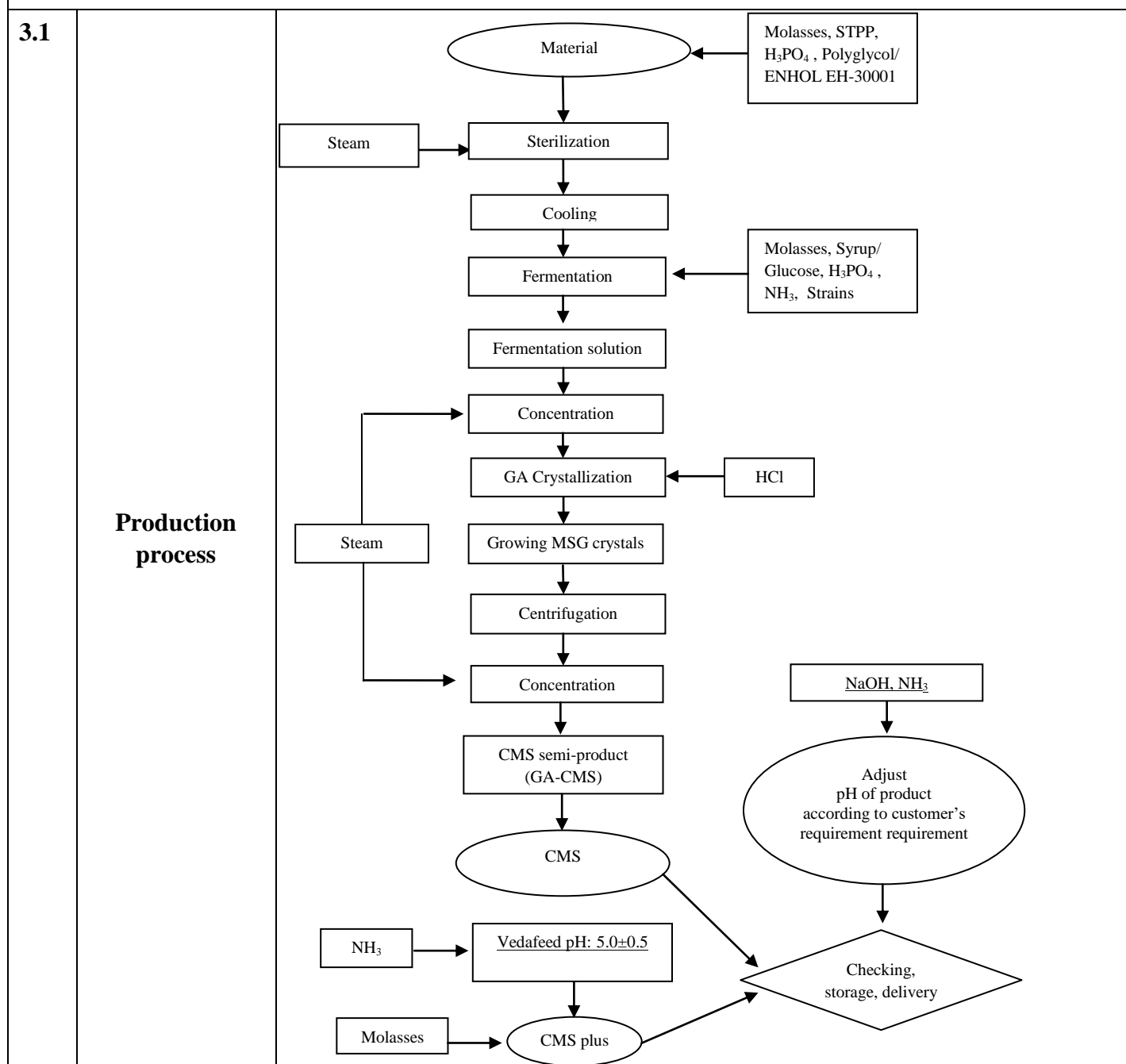
(Based on GMP + D2.6)

SDS No. SDS 034-3

FEED SAFETY DATA SHEET		0.1. Product	CMS (Condensed molasses fermentation solubles) CMS Plus (Condensed molasses fermentation solubles plus)
		0.2. Status	Revision
		0.3. Version number	3
		0.4. Version date	14/08/2023
1. Name of purchasing company (GMP+)			
1.1	Responsibility for the feed safety sheet		VEDAN (VIETNAM) ENTERPRISE Corp., Ltd
1.2	Contact	Address	National Road 51, Hamlet 1A, Phuoc Thai Village, Long Thanh District, Dong Nai Province, Vietnam
		Telephone	(+84)251-3825111
		Fax	(+84)251-3825138
		E-mail	vedanservices@vedaninternational.com
		Website	www.vedan.com.vn
1.3	Approved by	<u>QA& Central Laboratory Division Manager</u>	
2. Identification of the product			
2.1	Product name	CMS (Condensed molasses fermentation solubles) CMS Plus (Condensed molasses fermentation solubles plus)	
2.2	Trade name	Condensed molasses fermentation solubles Condensed molasses fermentation solubles plus	
2.3	Article code of the company	N/A	
2.4	Permit number (if applicable)	C810239GMP-02.2017	
2.5	Product description	CMS (Condensed molasses fermentation solubles) is a by-product obtained after the production of monosodium glutamate.	

		CMS plus (Condensed molasses fermentation solubles plus) is a by-product obtained after the production of monosodium glutamate, molasses
2.6	Origin	<p>Manufacturer :</p> <p>VEDAN (VIETNAM) ENTERPRISE Corp., Ltd</p> <p>Address : National Road 51, Hamlet 1A, Phuoc Thai Village, Long Thanh District, Dong Nai Province, Vietnam</p> <p>Country origin: Vietnam</p>
2.7	Supplier	<p>VEDAN (VIETNAM) ENTERPRISE Corp., Ltd</p> <p>Address : National Road 51, Hamlet 1A, Phuoc Thai Village, Long Thanh District, Dong Nai Province, Vietnam</p>

3. Product description



3.2	Raw materials and auxiliary substances used (including feed additives and processing aids)	Material: - CMS : Condensed molasses fermentation solubles (GA-CMS) - CMS Plus: Condensed molasses fermentation solubles (GA-CMS), molasses																																																																																											
3.3	Logistical process (transport, (interim) storage, packaging)	Stored in sealed tank, at ambient temperature with adequate ventilation, transport by ship.																																																																																											
3.4	Storage life	12 months from manufacturing date																																																																																											
3.5	Indicative analysis	a. CMS <table><tr><th>Parameter</th><th>Unit</th><th>Limit</th></tr><tr><td>Physical Form</td><td>-</td><td>Liquid</td></tr><tr><td>Colour</td><td>-</td><td>Dark brown</td></tr><tr><td>pH</td><td>-</td><td>3.5 – 4.5</td></tr><tr><td>Water content</td><td>% (w/w)</td><td>Max 44</td></tr><tr><td>Total solid</td><td>% (w/w)</td><td>Min 56</td></tr><tr><td>Crude Protein (Nx6.25)</td><td>% (w/w)</td><td>Min 26</td></tr><tr><td>Crude ash</td><td>% (w/w)</td><td>Max 15</td></tr></table> b. CMS Plus <table><tr><th rowspan="2">Parameter</th><th rowspan="2">Unit</th><th colspan="5">Limit</th></tr><tr><th>CMS+55</th><th>CMS+64</th><th>CMS+73</th><th>CMS+82</th><th>CMS+91</th></tr><tr><td>Physical Form</td><td>-</td><td colspan="2">Liquid</td><td></td><td></td><td></td></tr><tr><td>Colour</td><td>-</td><td colspan="5">Black brown</td></tr><tr><td>Foreign matter</td><td>-</td><td colspan="5">Negative</td></tr><tr><td>Water content</td><td>% (w/w)</td><td>Max 34</td><td>Max 36</td><td>Max 38</td><td>Max 40</td><td>Max 42</td></tr><tr><td>Total sugar</td><td>% (w/w)</td><td>Min 24</td><td>Min 20</td><td>Min 16</td><td>Min 12</td><td>Min 8</td></tr><tr><td>Crude Protein (Nx6.25)</td><td>% (w/w)</td><td>Min 16</td><td>Min 18</td><td>Min 20</td><td>Min 22</td><td>Min 24</td></tr><tr><td>Crude ash</td><td>% (w/w)</td><td>Max 15</td><td>Max 15</td><td>Max 15</td><td>Max 15</td><td>Max 15</td></tr></table>							Parameter	Unit	Limit	Physical Form	-	Liquid	Colour	-	Dark brown	pH	-	3.5 – 4.5	Water content	% (w/w)	Max 44	Total solid	% (w/w)	Min 56	Crude Protein (Nx6.25)	% (w/w)	Min 26	Crude ash	% (w/w)	Max 15	Parameter	Unit	Limit					CMS+55	CMS+64	CMS+73	CMS+82	CMS+91	Physical Form	-	Liquid					Colour	-	Black brown					Foreign matter	-	Negative					Water content	% (w/w)	Max 34	Max 36	Max 38	Max 40	Max 42	Total sugar	% (w/w)	Min 24	Min 20	Min 16	Min 12	Min 8	Crude Protein (Nx6.25)	% (w/w)	Min 16	Min 18	Min 20	Min 22	Min 24	Crude ash	% (w/w)	Max 15	Max 15	Max 15	Max 15	Max 15
Parameter	Unit	Limit																																																																																											
Physical Form	-	Liquid																																																																																											
Colour	-	Dark brown																																																																																											
pH	-	3.5 – 4.5																																																																																											
Water content	% (w/w)	Max 44																																																																																											
Total solid	% (w/w)	Min 56																																																																																											
Crude Protein (Nx6.25)	% (w/w)	Min 26																																																																																											
Crude ash	% (w/w)	Max 15																																																																																											
Parameter	Unit	Limit																																																																																											
		CMS+55	CMS+64	CMS+73	CMS+82	CMS+91																																																																																							
Physical Form	-	Liquid																																																																																											
Colour	-	Black brown																																																																																											
Foreign matter	-	Negative																																																																																											
Water content	% (w/w)	Max 34	Max 36	Max 38	Max 40	Max 42																																																																																							
Total sugar	% (w/w)	Min 24	Min 20	Min 16	Min 12	Min 8																																																																																							
Crude Protein (Nx6.25)	% (w/w)	Min 16	Min 18	Min 20	Min 22	Min 24																																																																																							
Crude ash	% (w/w)	Max 15	Max 15	Max 15	Max 15	Max 15																																																																																							
4. Standards / Requirements																																																																																													
4.1	Relevant legislation and other requirements	Product complies with the requirements of <u>GMP+FC Scheme 2020</u> and other relevant current legislations.																																																																																											
4.2	Relevant product standards / requirements	a. CMS and CMS plus <table><tr><th>Parameter</th><th>Unit</th><th>Limit</th></tr><tr><td>As</td><td>mg/kg</td><td>Max 2</td></tr></table>							Parameter	Unit	Limit	As	mg/kg	Max 2																																																																															
Parameter	Unit	Limit																																																																																											
As	mg/kg	Max 2																																																																																											

(chemical, physical, microbiological)	Pb	mg/kg	Max 10
	Hg	mg/kg	Max 0.1
	Cd	mg/kg	Max 1
	Salmonella	/25g	Không phát hiện
	Mycotoxin: Aflatoxin B1	mg/kg	Max 0.02
	Antibacterial inhibition	µg/kg	Không phát hiện
	Enterobacteriace	cfu/g	Max 300
	Moulds	cfu/g	Max 10 ⁶
	Mycotoxin: Zearalenon	mg/kg	Max 0.3
	Mycotoxin: DON (Deoxynivalenol)	mg/kg	Max 5
	Mycotoxin: Ochratoxin A	mg/kg	Max 0.15
	Melamine	mg/kg	Max 2.5
	Flourine	mg/kg	Max 150
	Potassium	g/kg	Max 60
	Hydrocyanic acid (HCN)	mg/kg	Max 50
	<i>Radioactive material</i> Radioactivity Sum of Cs-134 and Cs-137	Bq/kg	Max 40
	<u>Dioxin</u>	<u>ng WHO- PCDD/FTEQ/kg</u>	<u>Max 0.75</u>
	<u>Dioxin like PCBs</u>	<u>ng WHO-PCB- TEQ/kg</u>	<u>Max 0.35</u>
	<u>Non-dioxin-like PCBs</u>	<u>µg/kg</u>	<u>Max 10</u>
	<u>Aldrin Dieldrin</u> (Singly or combined expressed as dieldrin)	<u>mg/kg</u>	<u>Max 0.01</u>
	<u>Chlordane</u>	<u>mg/kg</u>	<u>Max 0.02</u>
	<u>DDT (sum of DDT-, DDD- (or TDE-)</u>	<u>mg/kg</u>	<u>Max 0.05</u>
	<u>Endosulfan</u>	<u>mg/kg</u>	<u>Max 0.1</u>
	<u>Endrin</u>	<u>mg/kg</u>	<u>Max 0.1</u>
	<u>Heptachlor</u>	<u>mg/kg</u>	<u>Max 0.1</u>
	<u>Hexachlorobenzene (HCB)</u>	<u>mg/kg</u>	<u>Max 0.01</u>
	<u>Hexachlorocyclohexane (HCH)- Alfa-isomer</u>	<u>mg/kg</u>	<u>Max 0.02</u>
	<u>Hexachlorocyclohexane (HCH)- Beta-isomer</u>	<u>mg/kg</u>	<u>Max 0.01</u>
	<u>Hexachlorocyclohexane (HCH): - Gamma-isomer (lindane)</u>	<u>mg/kg</u>	<u>Max 0.2</u>

		<u>Nitrites</u>	<u>mg/kg</u>	<u>Max 15</u>	
		b. CMS plus			
		<i>Parameter</i>	<i>Unit</i>	<i>Limit</i>	
		E. coli	cfu/g	< 10	
4.3	Intended use	Used as a raw material for feed manufacturing			
4.4	Processing of the product (indicate whether the (former) foodstuff needs further processing or has been processed into feed material)	Used as a raw material for feed manufacturing			
4.5	Processing step and instructions for processing	See section 3			
4.6	Storage and retention conditions	<u>The product is stored in closed tanks or drums. Keep in dry, cool and covered place.</u>			
4.7	Transport requirements	Transport product by truck, trailer, ship, ect at ambient temperature. Do not transport with inappropriate food/ non-food product.			
5. Labelling					
Requested by the importing country or the importer					
6. HACCP					
6.1. Hazard	6.2. Risk assessment				6.3. Control measure
	Cat (C, M, F)	Likely Occurrence	Severity	Risk	
Physical (Garbage, Impurities, Broken glassware)	F	Medium	High	No	- Equipment, closed tank. - Specification of material - PJ500021. - HACCP plan of CMS, CMS Plus product – PJ500075.
Microorganism (Moulds, Yeast)	M	Medium	High	No	- Specification of material - PJ500021. - HACCP plan of CMS, CMS Plus product – PJ500075.

Chemical (Pb, As, Cd, Hg, Pesticide residue: organochlorine and organophosphates, Radioactive substance, Ethoxyquin and prohibited substances, mycotoxin, chemical residue (HCl residue, NH ₃ residue), Penicillin residue, Lead in the density meter, Mercury in the thermometer, Laboratory chemical)	C	Medium	High	No	- Specification of material - PJ500021. - HACCP plan of CMS, CMS Plus product – PJ500075.
--	---	--------	------	----	--

7. Monitoring

7.1. Parameter	7.2. Sampling moment/ Point	7.3. Frequency
a. CMS and CMS plus		
Form	Finished product	Every batch
Colour	Finished product	Every batch
Water content	Finished product	Every batch
Crude Protein (Nx6.25)	Finished product	Every batch
<u>Crude ash</u>	Finished product	Every batch
As	Finished product	Once/ year
Pb	Finished product	Once/ year
Hg	Finished product	Once/ year
Cd	Finished product	Once/ year
Salmonella	Finished product	Once/ year
Mycotoxin: Aflatoxin B1	Finished product	Once/ year
Antibacterial inhibition	Finished product	Once/ year
Enterobacteriace	Finished product	Once/ year
Moulds	Finished product	Once/ year

Mycotoxin: Zearalenon	Finished product	Once/ year
Mycotoxin: DON (Deoxynivalenol)	Finished product	Once/ year
Mycotoxin: Ochratoxin A	Finished product	Once/ year
Melamine	Finished product	Once/ year
Flourine	Finished product	Once/ year
Potassium	Finished product	Once/ year
Hydrocyanic acid (HCN)	Finished product	Once/ year
Radioactive material (Sum of Cs-134 and Cs-137)	Finished product	Once/ year
<u>Dioxin</u>	<u>Finished product</u>	<u>Once/ year</u>
<u>Dioxin like PCBs</u>	<u>Finished product</u>	<u>Once/ year</u>
<u>Non-dioxin-like PCBs</u>	<u>Finished product</u>	<u>Once/ year</u>
<u>Aldrin Dieldrin</u> (Singly or combined expressed as dieldrin)	<u>Finished product</u>	<u>Once/ year</u>
<u>Chlordane</u>	<u>Finished product</u>	<u>Once/ year</u>
<u>DDT (sum of DDT-, DDD- (or TDE-)</u>	<u>Finished product</u>	<u>Once/ year</u>
<u>Endosulfan</u>	<u>Finished product</u>	<u>Once/ year</u>
<u>Endrin</u>	<u>Finished product</u>	<u>Once/ year</u>
<u>Heptachlor</u>	<u>Finished product</u>	<u>Once/ year</u>
<u>Hexachlorobenzene (HCB)</u>	<u>Finished product</u>	<u>Once/ year</u>
<u>Hexachlorocyclohexane</u> (HCH)- Alfa-isomer	<u>Finished product</u>	<u>Once/ year</u>
<u>Hexachlorocyclohexane</u> (HCH)- Beta-isomer	<u>Finished product</u>	<u>Once/ year</u>
<u>Hexachlorocyclohexane</u> (HCH): - Gamma-isomer (lindane)	<u>Finished product</u>	<u>Once/ year</u>
<u>Nitrites</u>	<u>Finished product</u>	<u>Once/ year</u>
b. CMS		
E. coli	Finished product	Once/ year
c. CMS plus		
Total sugar	Finished product	Every batch
8. Communication in case of non-conformities		
In case the batch does not correspond with the FSDS or the suspicion exist that the health of animals or the food/feed safety is in danger than this must be actively reported to our company.		
9. Remarks		

10. Signatures	
<p>.....</p> <p>DD / MM / YY</p>	